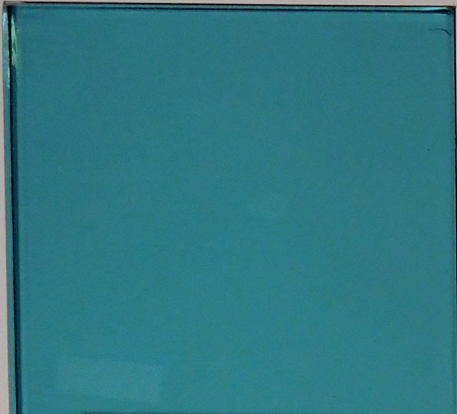


GLASS



GOLDEN STATE GLAZING INC.
SHARP GROSSMONT
GLASS SAMPLES

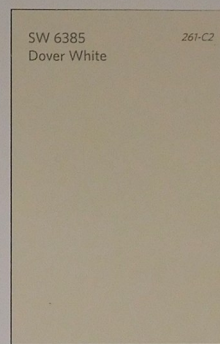
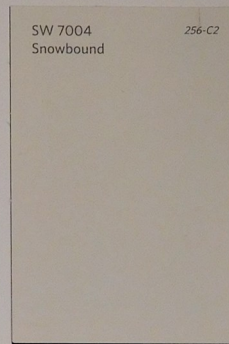
AZURIA® Glass - Glass Below if Insulating Glass Unit M-4 04/21

Sample	VLT %	Exterior Reflectance	Interior Reflectance	U-Value Imperial (W/m²K)		SHGC	LSG
				Air	Argon		
Clear AZURIA®	88%	7%	7%	1.02	NA	0.52	1.21
SOLARBAN® 70 (3)	54%	9%	10%	0.29	0.24	0.31	1.74
SOLARBAN® 70 (3)	49%	9%	11%	0.28	0.24	0.29	1.82
SOLARBAN® 80 (3)	39%	13%	12%	0.29	0.24	0.27	1.44
SUNGATE® 400 (3)	59%	10%	12%	0.32	0.28	0.34	1.71

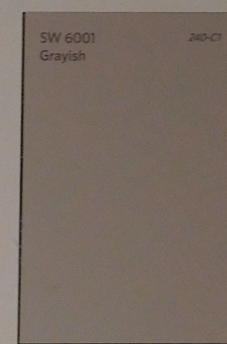
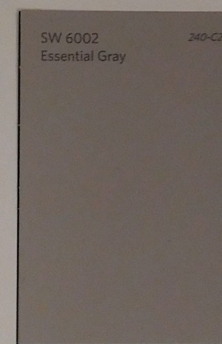
Exterior: Sample Glass is Annealed

Vitro (Formerly PPG glass) 1-855-887-6457 (1-855-VITRO-GLASS)

FIELD PAINT COLOR



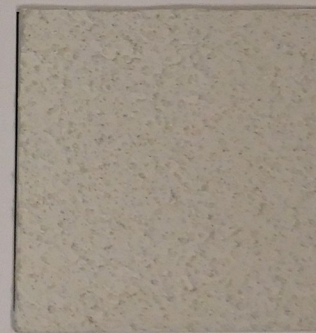
ACCENT PAINT COLOR



METAL PANEL



STUCCO



PROJECT NO. 2021-43

MASCARI WARNER DINH
Architects
1717 Kettner Blvd., Suite 100
San Diego, California 92101
619.814.8883 Fax 619.814.0881

Layton
CONSTRUCTING WITH INTEGRITY

SHARP Grossmont
Hospital

SHARP GROSSMONT HOSPITAL NEUROSCINCES CENTER
5555 GROSSMONT CENTER DRIVE
LA MESA, CALIFORNIA
MARCH 21, 2022