

**Walkway of the Stars**

**La Mesa's Tradition of Volunteerism**

(Excerpts of descriptions submitted by artists.)

**1. "Helping Hands Make La Mesa Shine"**



10' x 12.5' by Shannen Mythen.

Helping hands represent all of the volunteers that help in our community and the impact they have on making the community shine. The landscape is inspired by the City logo. The rolling hills, palm trees and local flowers and plants represented by the CA buckwheat and coastal agave. The color scheme is bright and vibrant to give a positive energy and to work cohesively with other murals in the walkway.

## 2. “Jewel of the Hills”



10' x 16' by Nolan Lee.

One of the things that makes La Mesa such an amazing community is the countless volunteers that serve in a variety of ways represented in three figures embodied as a giant jewel; highlighting the beauty of La Mesa and the people who serve it.

(Notes from Arts and Culture Commission: recommend to reduce scale/size of hands and to add action from the two figures on sides of giving – such as providing food.)

### 3. "Thanks for Your Help!"



10' x 18' by Channin Fulton.

This mural celebrates the little pockets of daily interaction that make up our community's "unseen/unsung" volunteers: the mom-coach bringing orange slices to the kids' ball game, the quiet neighbor providing a lesson on how to use tools to fix a favorite toy, or the teen offering to deliver a meal and flowers to a neighbor. These, are the small acts of volunteerism and kindness that often go unnoticed but grow the seeds to make our community great. The color palette and supporting nature affixes the interactions into the sunny La Mesa landscape.

(not to scale)

### Walkway of the Stars Murals (all 8 murals)



Allison Ave. Parking Lot

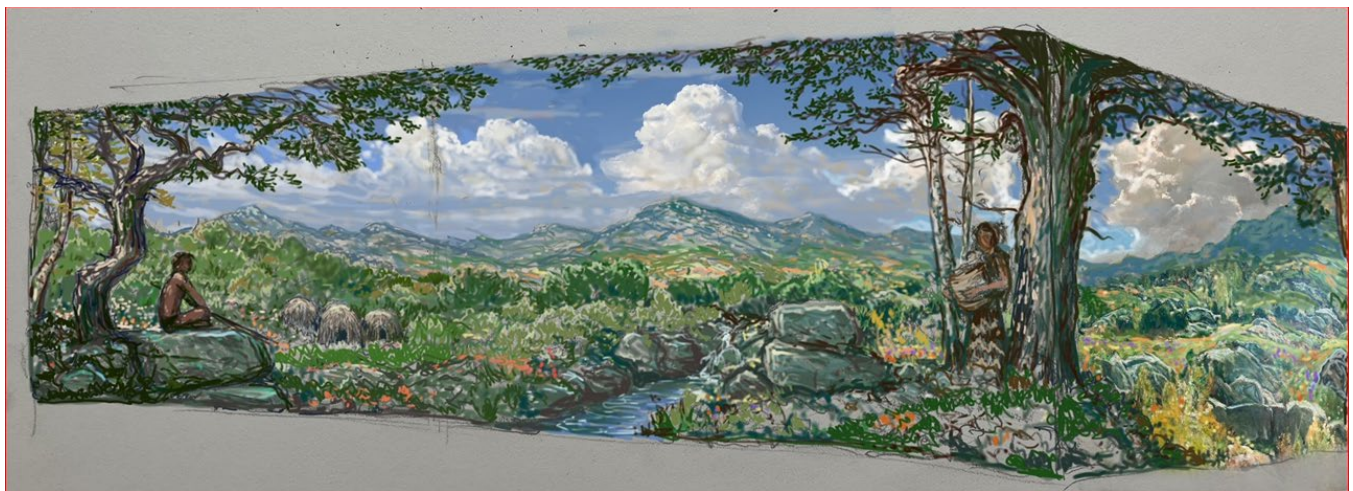
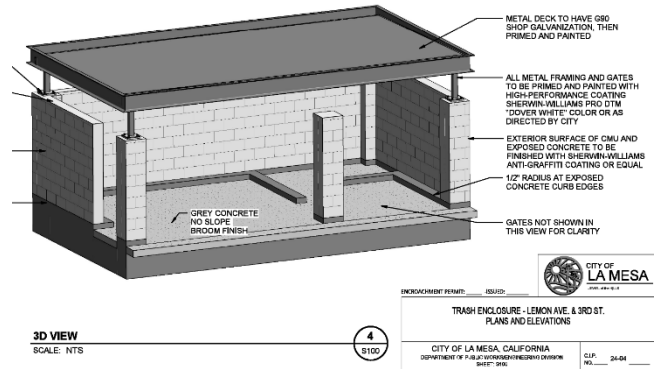


(North)

La Mesa Blvd.



# Lemon Avenue Parking Lot Enclosure



By Ed Piffard

This colorful mural will wrap around three sides of the brick enclosure facing the parking lot with a scene of what the artist imagines the current parking lot looked like 300 years ago. Near the foreground center you will see one of the many La Mesa springs flowing out from boulders. Native wildflowers, insects and reptiles will be painted in the extreme foreground. Birds and mammals will be subtly visible in the mid ground. The landscape will be framed in Engelmann oaks and western sycamores. A small grouping of Kumeyaay huts will be visible in the left mid ground with thin smoke wisps rising from a couple of them. A figure of a Kumeyaay woman with a basket will be subtly visible in the shade of one of the oaks and a hunter in the shade of a sycamore and oak on the other side. The style will approximate that of the famous San Diego/La Mesa painter Charles Reiffel from 100 years ago.