

La Mesa Bike and Sidewalk Connections Project

Planning Phase Projects



LMBSWC Project Overview

- Focused on the completion of gaps in the bike and pedestrian circulation networks along collector/arterial streets and other routes within the City of La Mesa in support of Climate Action Plan objectives, community health and active transportation goals.
- First of three funding phases: Planning (PA&ED), Design (PE) & Construction (CON)
- Active Transportation Program Grant from CTC: \$180K State + \$45K Local Funds
- Current scope includes eight conceptual level planning projects to assess opportunities and constraints, determine needs/demands, inform the community, collect feedback, and evaluate alternatives

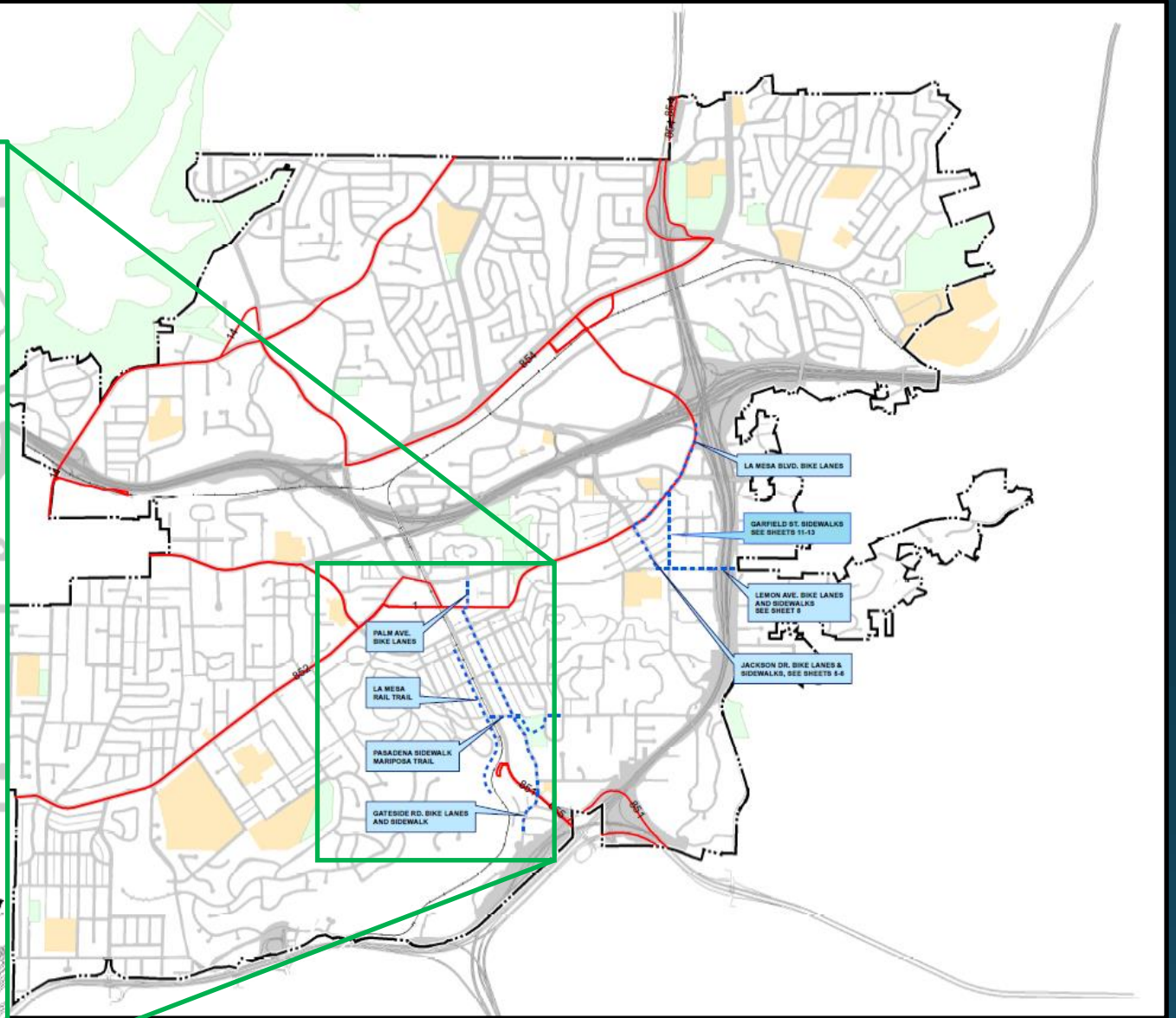


California
Transportation
Commission

**Active
Transportation
Program (ATP)**

Cycle 5

West Group



La Mesa Rail Trail Multi-Use Path

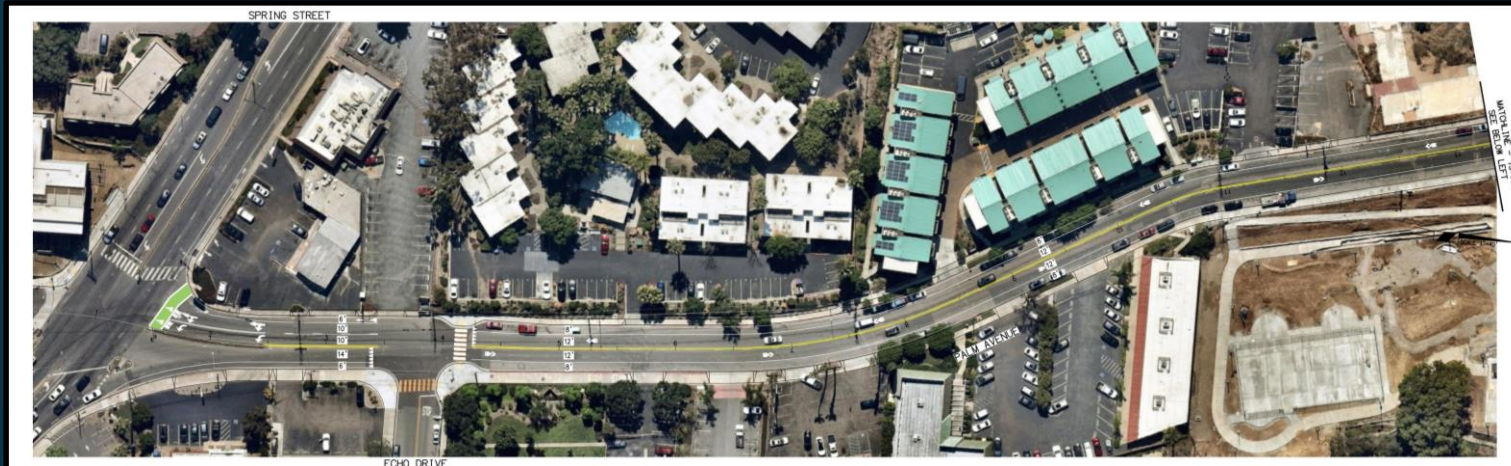


Alternatives:

Water Main Alternate A: Multi-use path located within new and existing City right-of-way and a Helix Water District easement. Would provide a curving, scenic route with a bridge crossing and hills up to 5% grade.

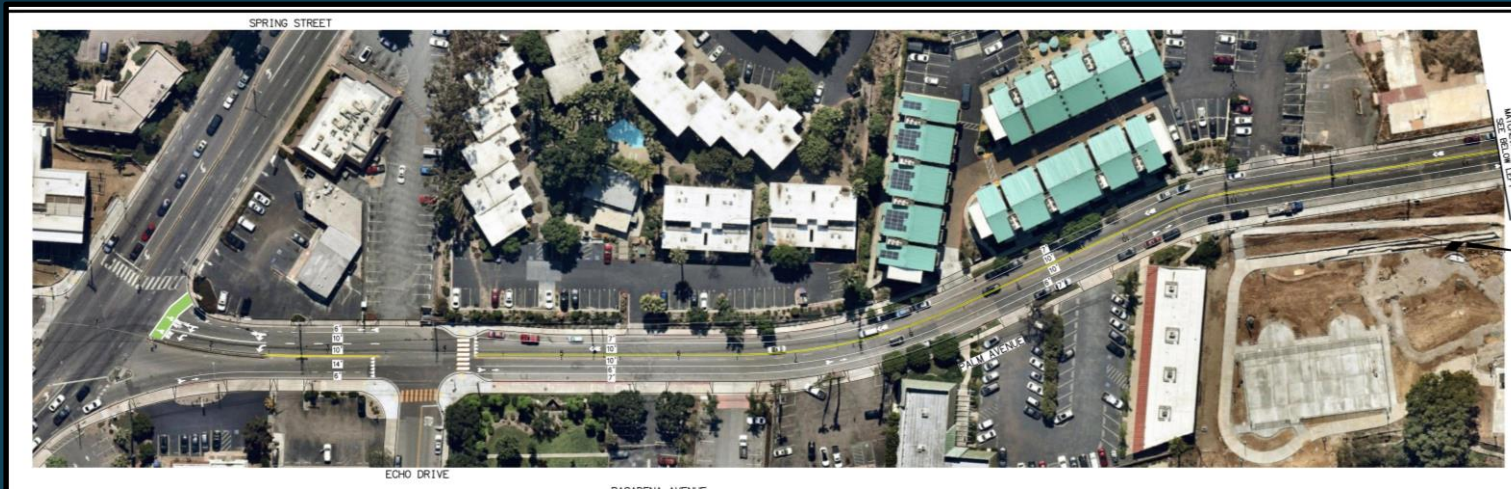
Railroad Alternate B: Multi-use path located within MTS right-of-way, parallel to and west of the San Diego Trolley. Would provide a flatter, more direct route but in closer proximity to the trolley tracks.

Palm Avenue Bike Lanes-Alternatives A & B



Proposed north-south bicycle route along Palm Avenue providing a lower-volume, lower-speed alternative to Spring Street for bicyclists traveling between University Avenue on the north and Broadway on the south.

Alternative A: Proposes shared bicycle lanes in both northbound and southbound directions. On-street parking to remain on both sides of the street.

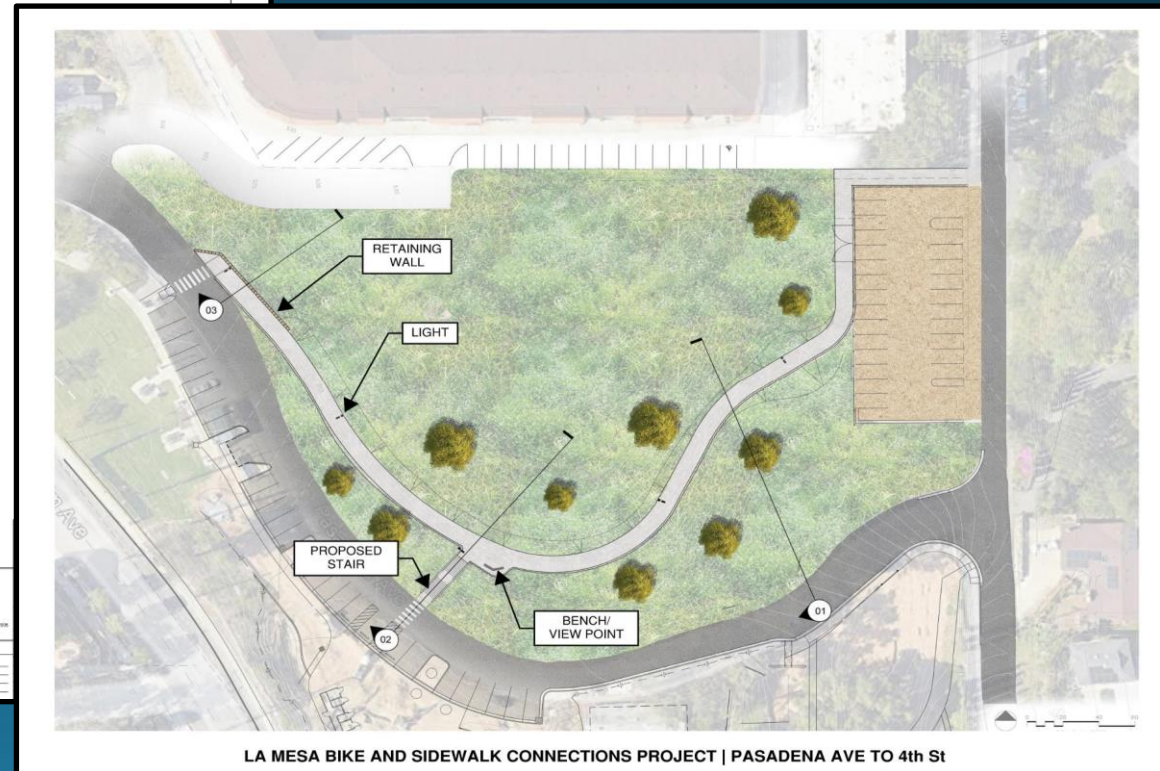
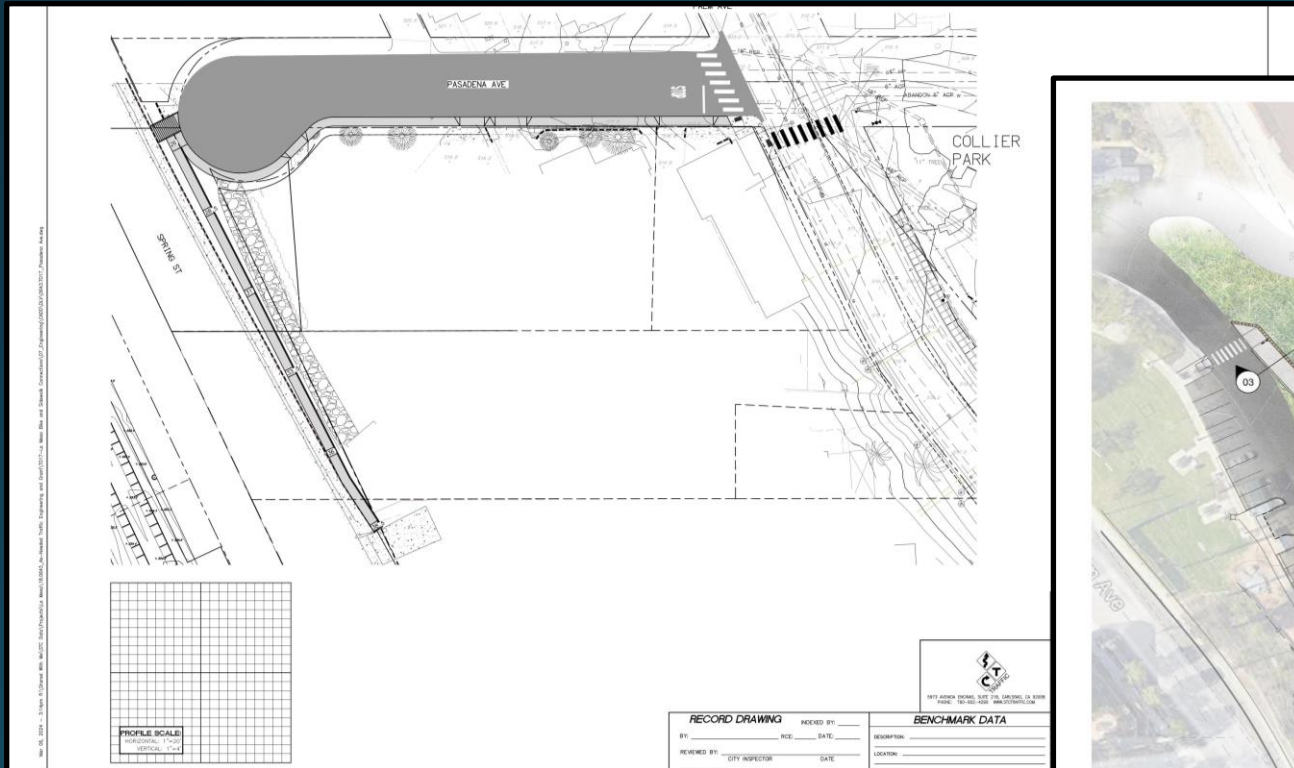


Alternative B: Proposes a shared bicycle lane southbound and a dedicated bike lane northbound where roadway width is available, while preserving on-street parking.

Pasadena Avenue/Collier/Mariposa Path

Elements:

- ADA-compliant access ramp and stair from Spring Street to Pasadena Avenue
- Pasadena Avenue sidewalk on south side from Spring St. to Palm Ave.
- Multi-use path traversing the north end of Collier Park between Palm Avenue and 4th Street, connecting to Mariposa Alley.



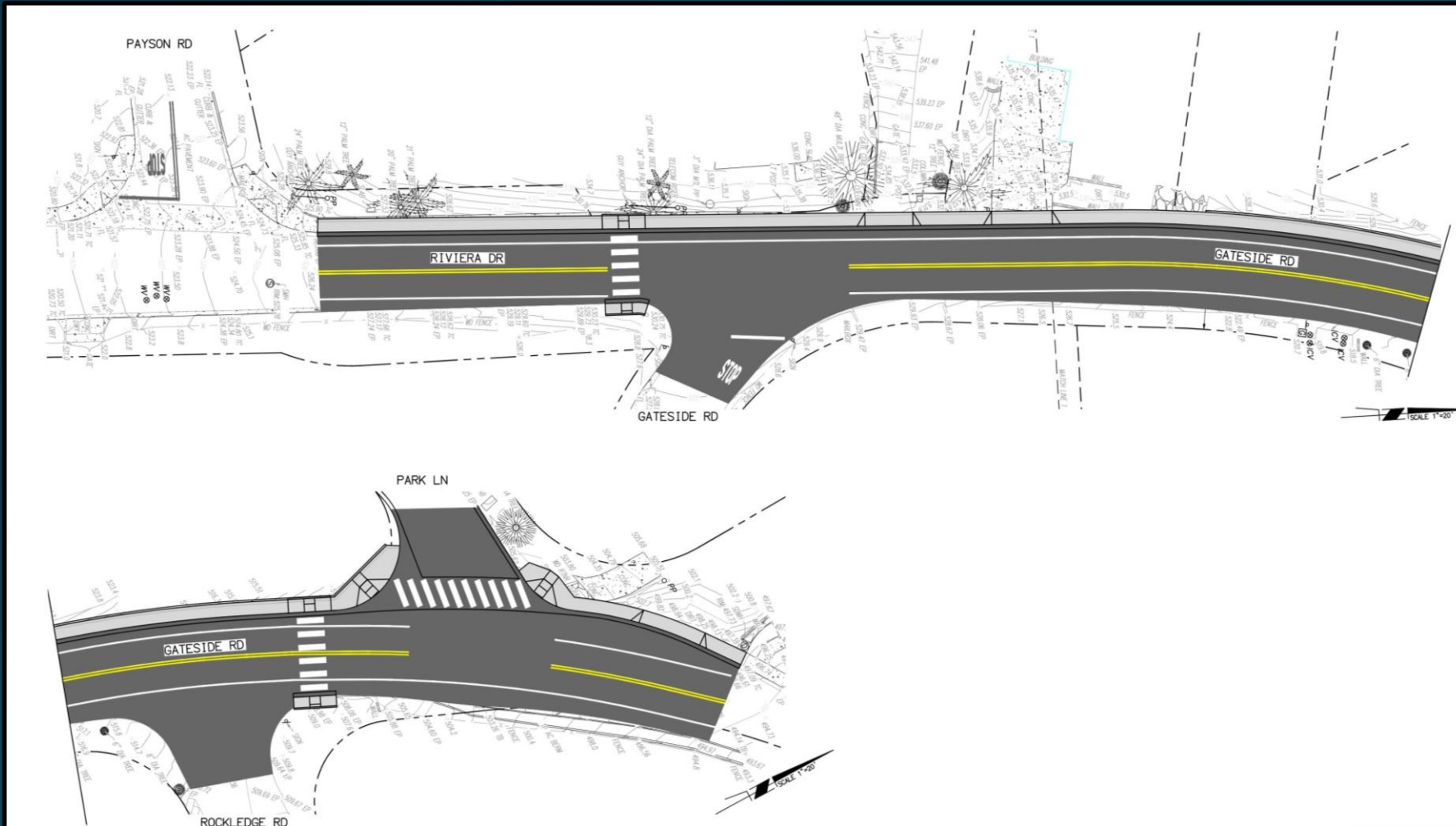
Pasadena Avenue/Collier/Mariposa Path

Elements:

- Grand stair and ADA-compliant access ramp from 4th Street to Edenvale Alley
- Enhanced paseo from Edenvale Alley to Upland Street, providing a low stress direct east-west “Park to Park” connection along Mariposa St.



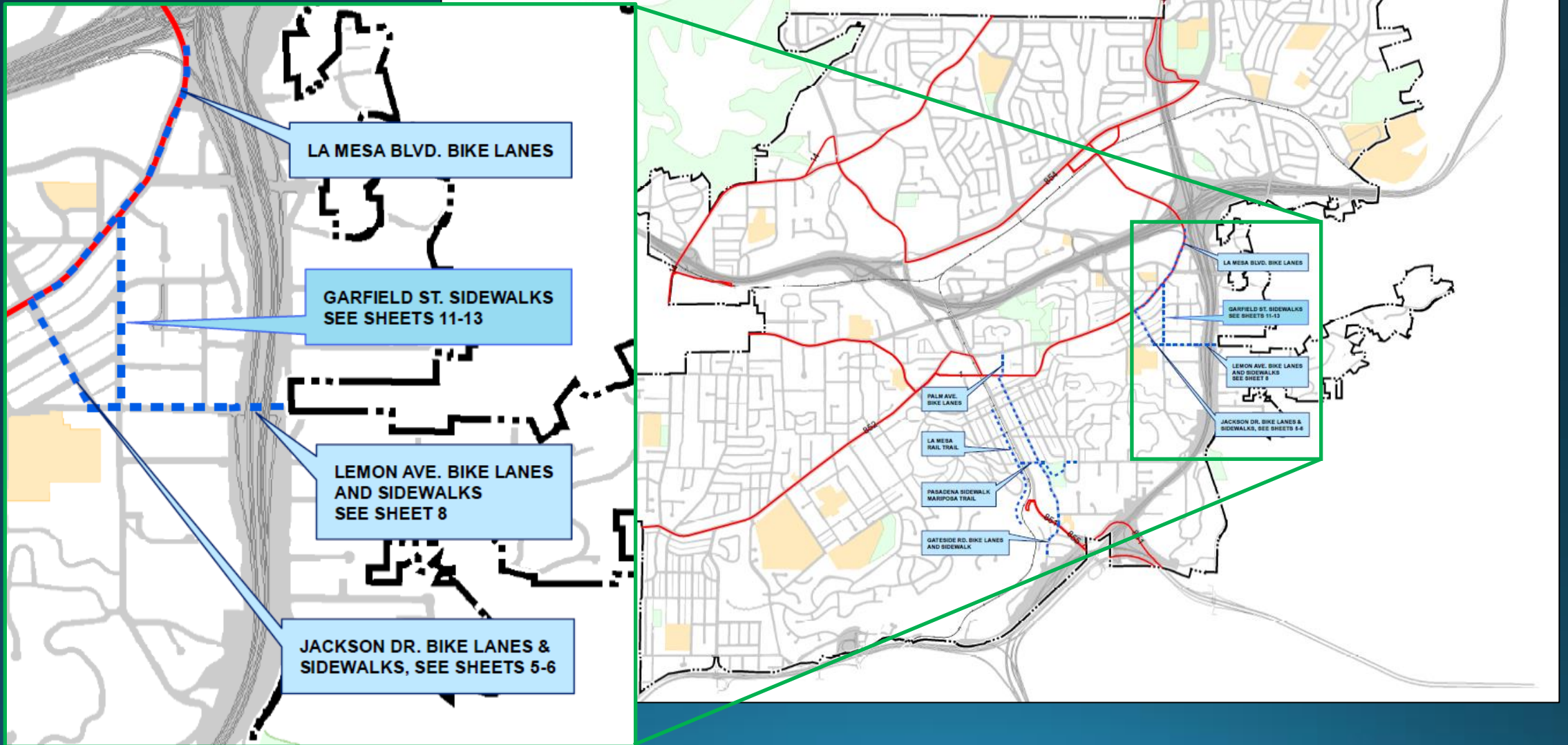
Gateside Road Bike Lanes and Sidewalk



Project would complete a gap in the bicycle and pedestrian facilities along Gateside Road between Park Lane and Payson Road, providing connectivity from the Spring Street corridor via Gateside Road/Riviera Drive to points west, including Lemon Grove Transit Station.

Elements would include ADA-compliant sidewalks, curb ramps, pedestrian crossings, advanced warning signage, retaining wall, utility relocations, eastbound and westbound bike lanes and limited right of way acquisition.

East Group



Lemon Avenue Sidewalks and Bike Lanes



BUFFERED BIKE LANES AND ENHANCED PEDESTRIAN CROSSING



NEIGHBORHOOD ENTRY MONUMENT WITH CHICANE

		CITY OF LA MESA JEWEL of the HILLS	
1573 AVENUE ENCLAVE, SUITE 218, CARLSBAD, CA 92008 PHONE: 760-462-4200 WWW.CITRAFFIC.COM		CITY OF LA MESA, CALIFORNIA DEPARTMENT OF PUBLIC WORKS / ENGINEERING DIVISION SHEET 1 OF 2 SHEETS	
BENCHMARK DATA		CITY ENGINEER: LEON FRISHT, P.E. #C.E. 43395	DATE:
DESCRIPTION:	ORIGINAL:	BY:	APPROVED:
LOCATION:	DATE:	FILMED:	DIVISION HEAD:
RECORD FROM:	ELEVATION:	DATUM:	CONTROL:
UTILITIES:	TRAFFIC:	DEVELOPMENT:	CAPITAL:
LAMBERT COORDINATES:	DESIGN ENGINEER:		
CONTROL:	CONTROL:		

Project proposes bicycle and pedestrian improvements, including traffic calming alternatives, on Lemon Avenue from Glen Street to SR 125. Alternatives include:

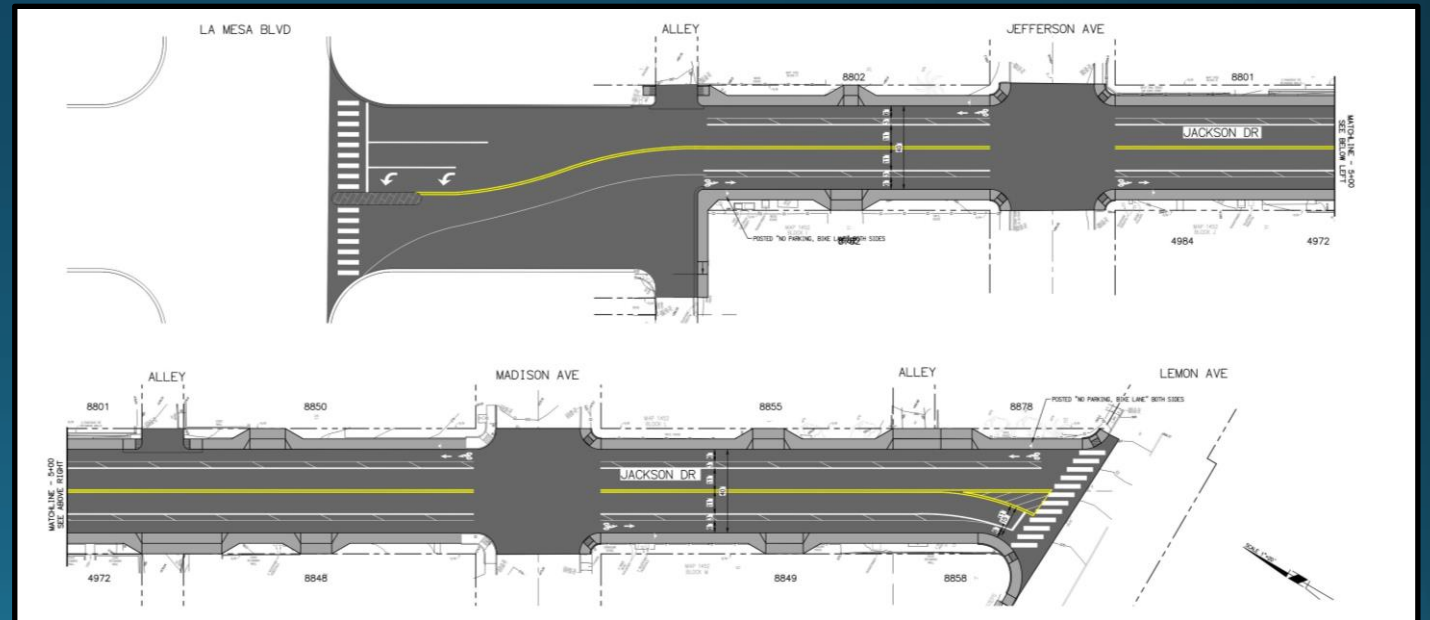
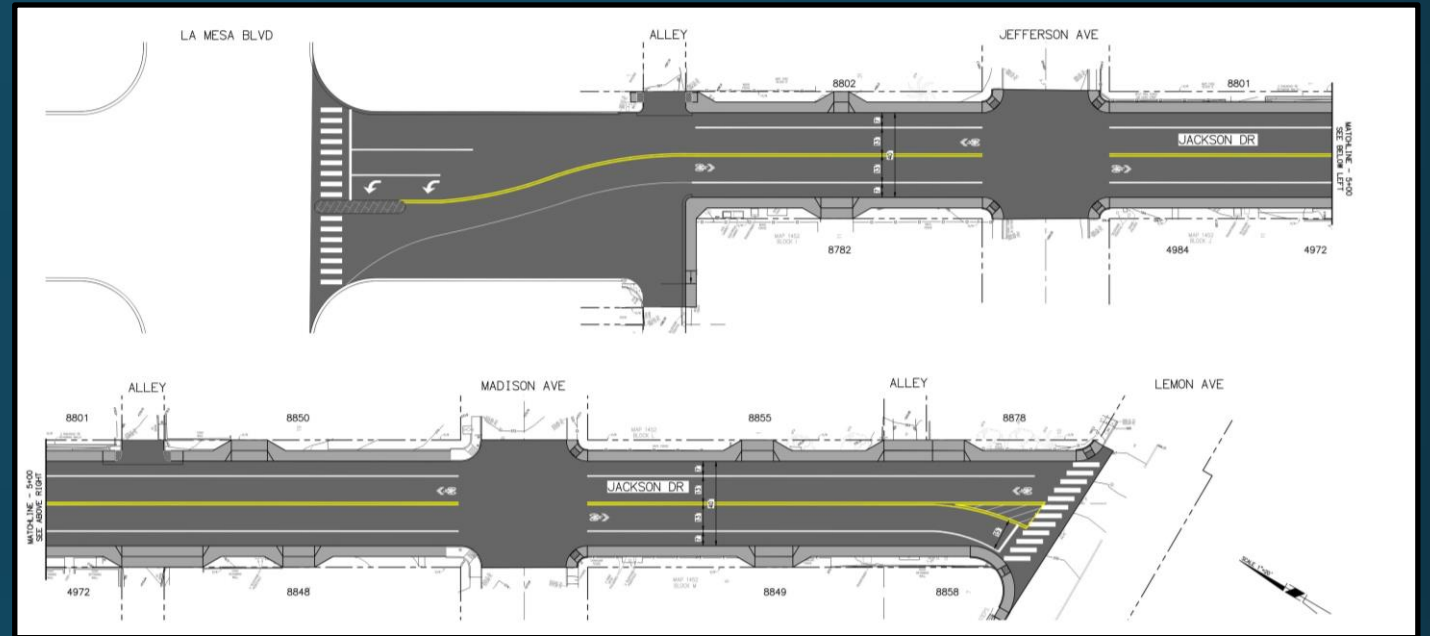
- Tabletop Raised Intersection at Garfield St.
- Enhanced Pedestrian Crossing with Curb Pop-outs at Wood St.
- Reduction of Posted Speed per Assembly Bill 43
- Posting of Permanent Truck Weight Restriction
- Improved Lighting and Monitoring Using Smart Street Lights
- Neighborhood Entry Monument with Chicane
- Permanent Radar Speed Feedback Signs
- Narrower Traffic Lanes with High Visibility Edge Lines
- ADA-Compliant Sidewalks on North Side
- Dedicated, Buffered Bike Lanes Both Sides with No On-Street Parking

Jackson Drive Bike Lanes and Sidewalks

Proposed pedestrian and bicycle improvements on Jackson Drive from Lemon Avenue to La Mesa Boulevard, connecting residential areas and Lemon Avenue Elementary School to the transit and commercial corridor along La Mesa Blvd. Alternatives include:

Alternative A: ADA-compliant sidewalks, curb ramps, and driveways with shared bike lanes, while retaining on-street parking

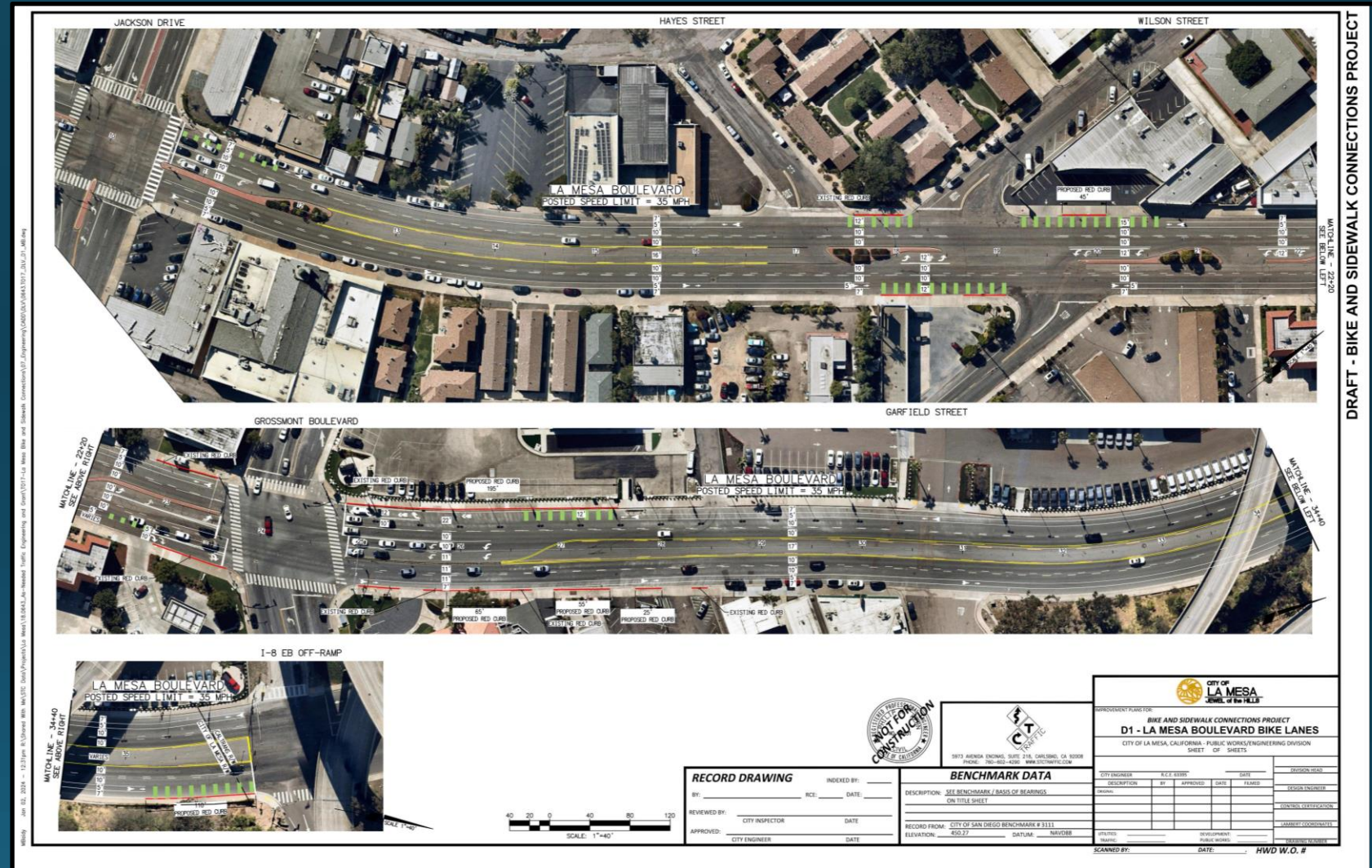
Alternative B: ADA-compliant sidewalks, curb ramps, and driveways with dedicated bike lanes and buffers, eliminating on-street parking



La Mesa Boulevard Bike Lanes-Alternative A

Bicycle lane improvements on La Mesa Boulevard from Jackson Drive to Interstate 8. This is expected to be an interim improvement until future multimodal improvements can be constructed as part of the longer term La Mesa Boulevard Complete Streets Plan project.

Alternative A: Restriping to add bike lanes within the existing roadway while retaining on-street parking.



DRAFT - BIKE AND SIDEWALK CONNECTIONS PROJECT

Garfield Street Sidewalks

Proposes pedestrian improvements on Garfield Street from Lemon Avenue to La Mesa Boulevard to connect schools and residential areas with the regional transit corridor along La Mesa Boulevard. Alternatives include:

Alternative A: ADA-compliant sidewalks, curb ramps, and driveways on the east side of the street.

Alternative B: ADA-compliant sidewalks, curb ramps, and driveways on the west side of the street.

“Pop-out” curb sections may be required in areas with inadequate parkways or private encroachments





LEMON AVE MADISON AVE
 GARFIELD ST
 STOP
 JEFFERSON AVE MOISAN WAY
 GARFIELD ST
 STOP
 LA MESA BLVD
 GARFIELD ST

SCALE: 1"=20'

CITY OF LA MESA
JEWEL of the HILLS

BIKE AND SIDEWALK CONNECTIONS PROJECT
7. GARFIELD STREET SIDEWALKS
ALTERNATE A & B

CITY OF LA MESA, CALIFORNIA
 DEPARTMENT OF PUBLIC WORKS / ENGINEERING DIVISION
 SHEET OF

NO. NO.

CITY ENGINEER: LEON FRIEST, P.E. R.G.E. 63365 DATE: _____ DIVISION HEAD: _____
 DESIGNER: _____
 CONTROL: CERTIFIC: _____
 LAMBERT COORDINATES: _____

RECORD DRAWING

BY: _____ INCH: _____ DATE: _____
 REVIEWED BY: _____ CITY INSPECTOR DATE: _____
 APPROVED BY: _____ CITY ENGINEER DATE: _____

BENCHMARK DATA

DESCRIPTION: _____
 LOCATION: _____
 RECORD FROM: _____ ELEVATION: _____ DATUM: _____

8873 AVONDA ENCLM1, SUITE 210, CARLSBAD, CA 92008
 PHONE: 760-402-4200 WWW.SCHWABER.COM
 10/18/2024 11:04AM 10/18/2024 11:04AM 10/18/2024 11:04AM 10/18/2024 11:04AM
 10/18/2024 11:04AM 10/18/2024 11:04AM 10/18/2024 11:04AM 10/18/2024 11:04AM

LMBSWC Project Schedule

- Concept Designs
 - 95% Complete
- Subcommittee Reviews
 - Ongoing
- Mailers/Project Websites
 - April
- Community Workshop
 - April 20th
- Commission Presentations
 - April/May
- City Council Meeting
 - July

